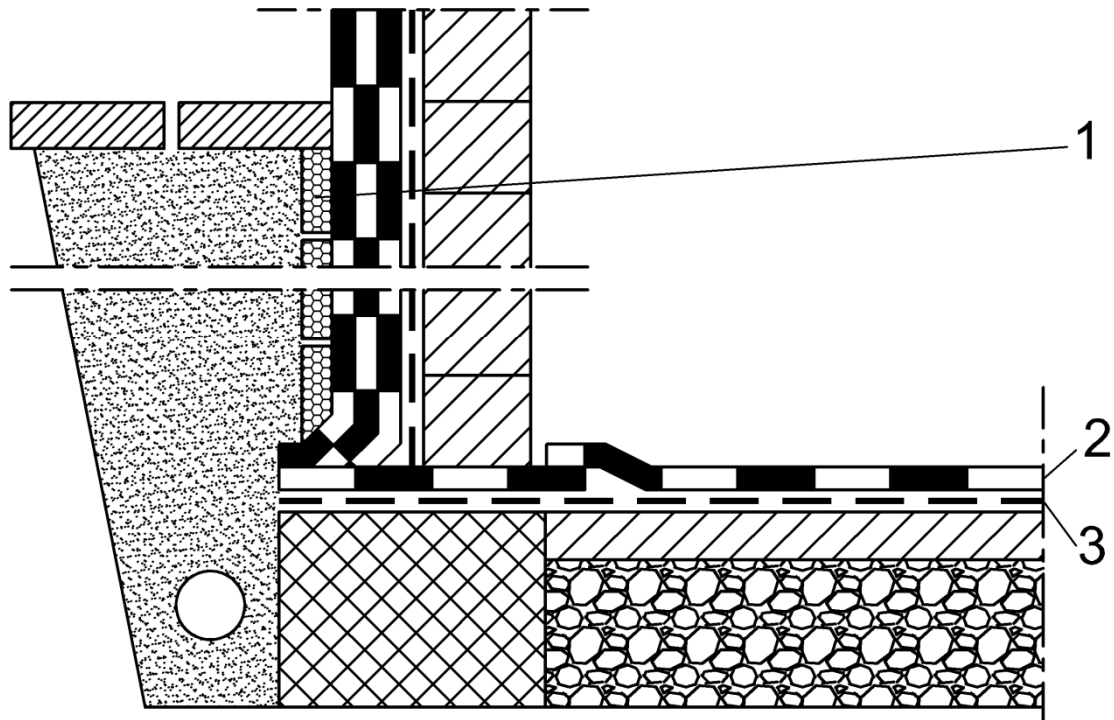


Basement waterproofing – active water pressure 4m to 9m

Waterproof insulation HI 6.1.4 APP



1. **TERMOTUR**, according to EN 13163, EU Construction Products Directive 89/106/EEC, thermal insulation is water resistance, also waterproofing protection layer
2. **IZOTEKT T4 PLUS** or **IZOTEKT P4 PLUS** in three layers, according to EN 13969 type T, in socle area min. 30 cm above ground level
3. **IBITOL**, cold applied asphalt coat - primer