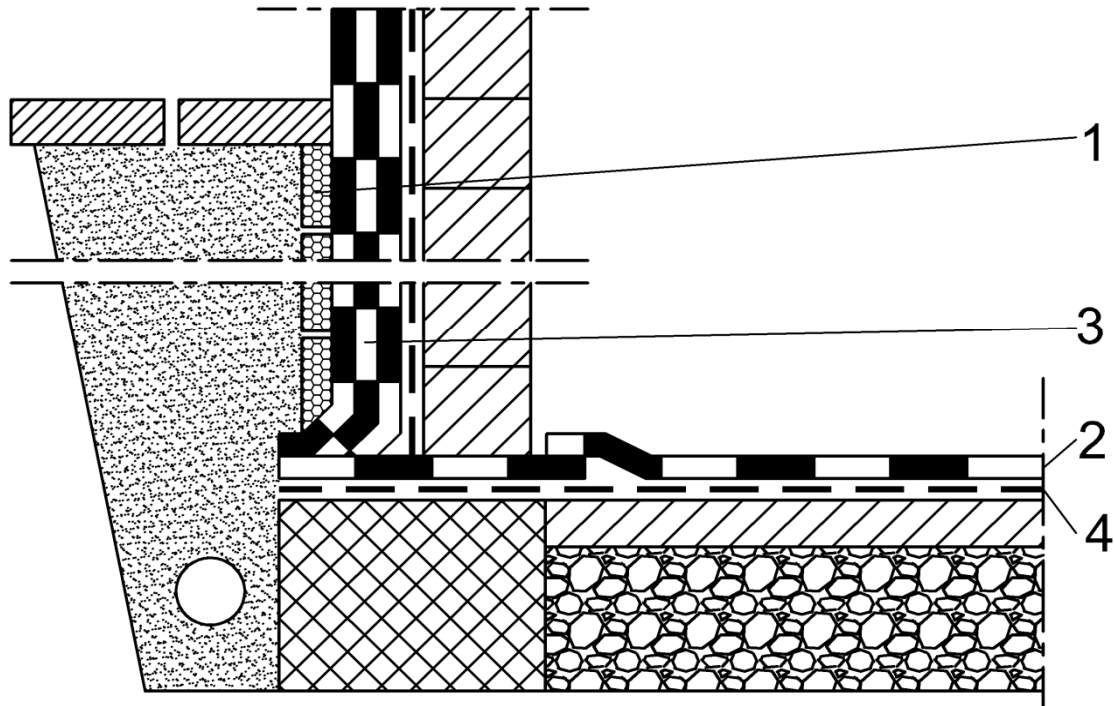


## Basement waterproofing– active water pressure under 9m

Waterproof insulation HI 6.1.5 SBS



1. **TERMODUR**, according to EN 13163, EU Construction Products Directive 89/106/EEC, thermal insulation is water resistance, also waterproofing protection layer
2. **BITALBIT AL V4**, according to EN 13969 type A
3. **IZOELAST T4 PLUS** or **IZOELAST P4 PLUS** in two layers, according to EN 13969 type T, in socle area min. 30 cm above ground level
4. **IBITOL**, cold applied asphalt coat - primer

\* also protection against penetration of radioactive gas Radon