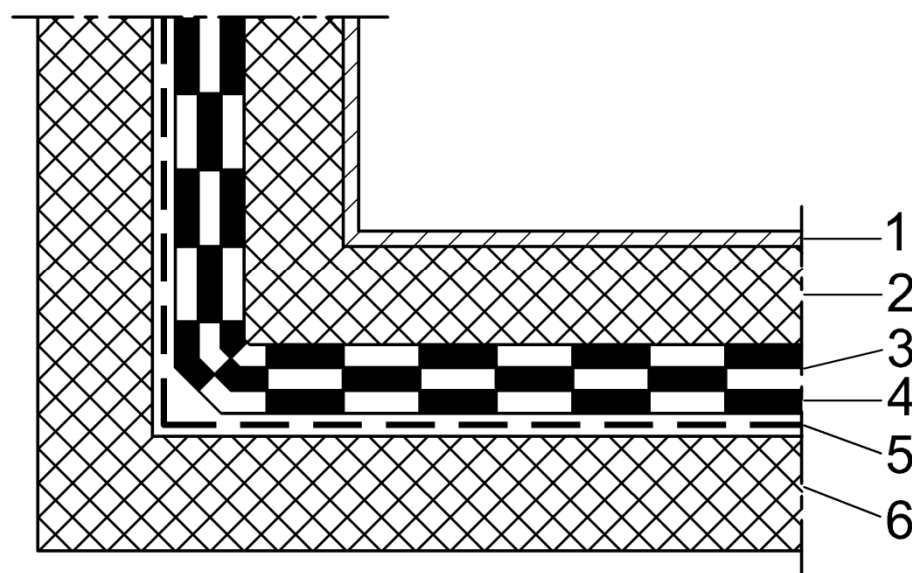


Waterproofing of swimming pools – basement tanking

Waterproof insulation HI 6.1.6 APP



1. Final pavement
2. Protective reinforced concrete construction
3. **IZOTEKT T4 PLUS** or **IZOTEKT P4 PLUS** in two layers, according to EN 13969 type T
4. **BITALBIT AL V3**, according to EN 13969 type A
5. **IBITOL**, cold applied asphalt coat - primer
6. Bearing reinforced concrete construction